



Bridge Rectifiers

Features

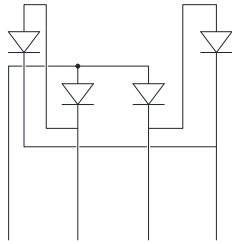
- " 8/ UHFRJQIL
- " *ODVV SDV WHG FKLS MXQFWLRQ
- " 7KLQ VLQJC OLQH SDFNDJH
- " +LJK VXUJH UHQW FDSDELOLW\
- " 6ROGHU GL y & SHDJ -(6' %

Typical Application

- *HQHUDO S VH XGJHLLQ & ZDYH UHFHFWLIL
- PRQLWRU JLQWHU SRZHU VXSSO\ VZL
- DGDSWHU RWHTXQG KQPHVDS\$SDQDFDWLR

Mechanical Data

- " Package - & 0ROGLQJ FF <QG \$PHH\WPPDELOLW\
- UDWLQJ 5R R+SOLRJHQ IUHH
- " Terminals 7LQ HG OHDGV VROGHUDEOH S
- 67' DQ %
- " Polarity: \$V PD RQ ERG\



Maximum Ratings

8QOHVV RWKHU ALVH V LILHG

PARAMETER	SYMBOL	UNIT	D8JC05	D8JC10	D8JC40
0D[LPXP 5HSHWLWLYH 3HDN 5HY950H 9ROWDJH					
0D[LPXP 506 9ROWDJH	9506	9			
0D[LPXP '& EORFNLQJ 9ROWDJH 9'&		9			
\$YHUDJH UHFHFWLILHG7RXWSXW FXUUHQW \$:LWK KHDWVLQN				
# +] VLQH ZDYH 5 ORD@c'G,f1&3					
)RUZDUG 6XUJH &XUUHQW 1RQ UHSHWLWLYH					p0
# PV VTXDUH ZDYH - F\FOH 7M					

100

100

5HY

\$SU

QJMLH F



v

